

47 ROOMS - 5 CATEGORIES

CLASSIC (20) Between 22 & 23 m ²	SUPERIOR (8) Between 23 & 24 m ²	CLUB (9) Between 22 & 25 m ²	EXECUTIVE (8) Between 27 & 30 m ²	SUITE (2) Between 46 & 48 m ²
<ul style="list-style-type: none"> • Queen size bed • Individually controlled air conditioning • Flat screen LCD TV • International channels • Telephone • Desk • Safe • Rain shower • Eco-labelled hospitality products • Hairdryer, shaver socket • Mini Bar • Nespresso machine 	<p>+</p> <ul style="list-style-type: none"> • Welcome tray : tea/ coffee, mineral water and treats • Bluetooth wireless speaker • Magnifying mirror • Slippers 	<p>+</p> <ul style="list-style-type: none"> • Kettle • Bathrobe 	<p>+</p> <ul style="list-style-type: none"> • Office space 	<p>+</p> <ul style="list-style-type: none"> • Private terrace • Bathtub

Twin : 3 Classic - 1 Club

- Free and unlimited high speed WIFI access
- An ideally Rooftop bar in the heart of Lisbon
- Complimentary coffee and tea for all guests
- Hot and cold buffet breakfast offering fresh products and juices



En position dominante sur le quartier du Chiado et du Bairro Alto, 9HOTEL MERCY se distingue tel un joyau aux facettes rutilantes par sa belle façade d'azulejos noirs. Classé 4 étoiles et idéalement situé en plein centre historique de Lisbonne, c'est un lieu privilégié à l'atmosphère intimiste et feutrée, à la fois masculine et contemporaine, ...quelque peu coquine et glamour.

Une très impressionnante suspension-sculpture, pièce unique de plus de 70 mètres de long, parcourt toute la réception et le lobby, avant de traverser la totalité du bar lounge, réunissant entre eux les différents espaces offerts aux invités. Dans un style résolument haute couture, les 47 chambres reprennent la palette chromatique baroque noir et or, et jouent avec les plus belles matières telles que la soie naturelle, le velours, la laque, et placent le design et le confort au centre des priorités.

Au 6ème étage, son bar terrasse offre une vue imprenable sur les toits en cascade de la vieille ville avec le Tage pour horizon... comme un appel à ressentir les vibrations de la capitale portugaise.

ROOFTOP BAR



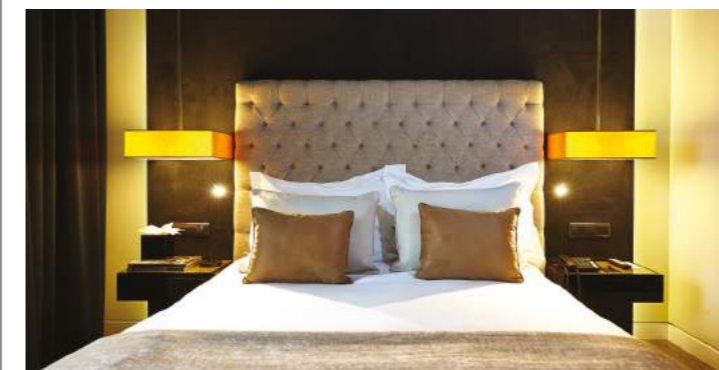
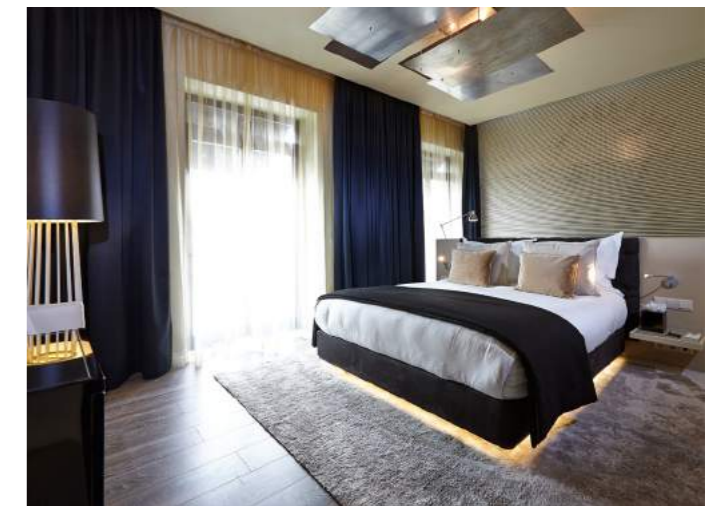
9HOTEL MERCY

Your chic passway to Lisbon ★★☆☆

In a dominant position overlooking the district of Chiado and Bairro Alto, 9HOTEL MERCY sparkles like a jewel thanks to its elegant black-tiled facade. With 4 stars and ideally located right in the historic centre of Lisbon, it's a special place with an intimate and plush atmosphere, both masculine and contemporary...with a touch of mischief and glamour.

A stunning suspended sculpture, a unique work over 70 metres long, stretches over the reception and lobby, before leading into the bar, linking together the various spaces open to guests. In a decidedly haute-couture style, the 47 rooms continue the baroque chromatic colour palette of black and gold, playing with the most luxurious materials such as natural silk, velvet, and enamel, with a focus on style and comfort.

On the 6th floor, the rooftop bar provides uninterrupted views over the roofs of the old town with the Tagus river on the horizon... inviting you to feel the heartbeat of the Portuguese capital.



M Metro station
Baixa-Chiado (Ligne blue)

✈ Portela Airport
By taxi - from Portela Airport 9km
average cost 18 euros

9 HOTEL MERCY

Address :
Rua da Misericórdia 76 - 1200-273 Lisbon

Website :
www.9hotelmecy.com

Contact address :
info@le9hotel-mercy.com

Phone :
+351 (0)21 2484 480

